



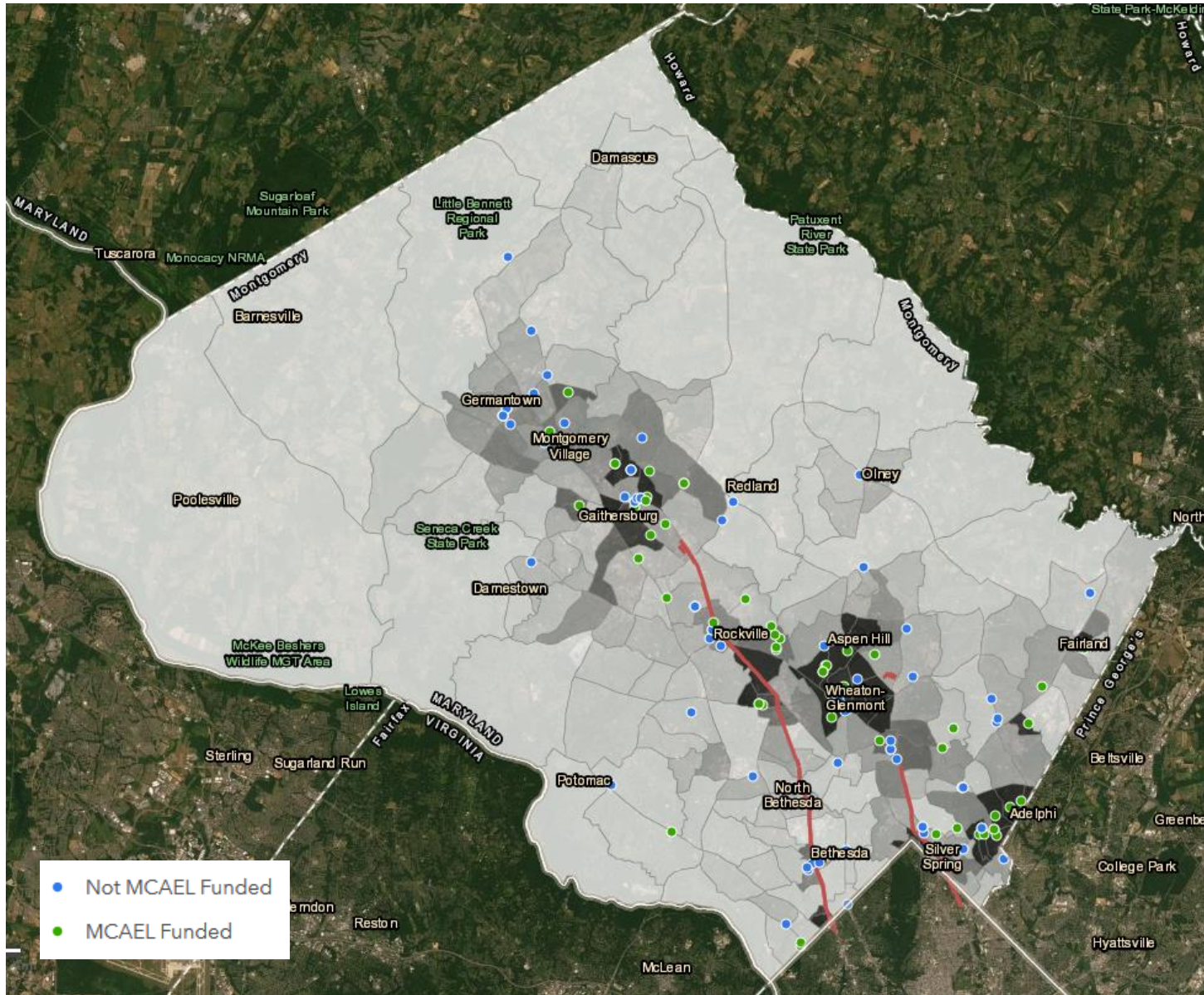
MCAEL

**Coalition for a
Connected
Community**

**Analysis of FY19 Learner Data
from Adult ESOL Providers in
Montgomery County, MD**

As of March 2, 2020

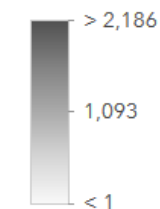
LEP Resident Density & Class Locations



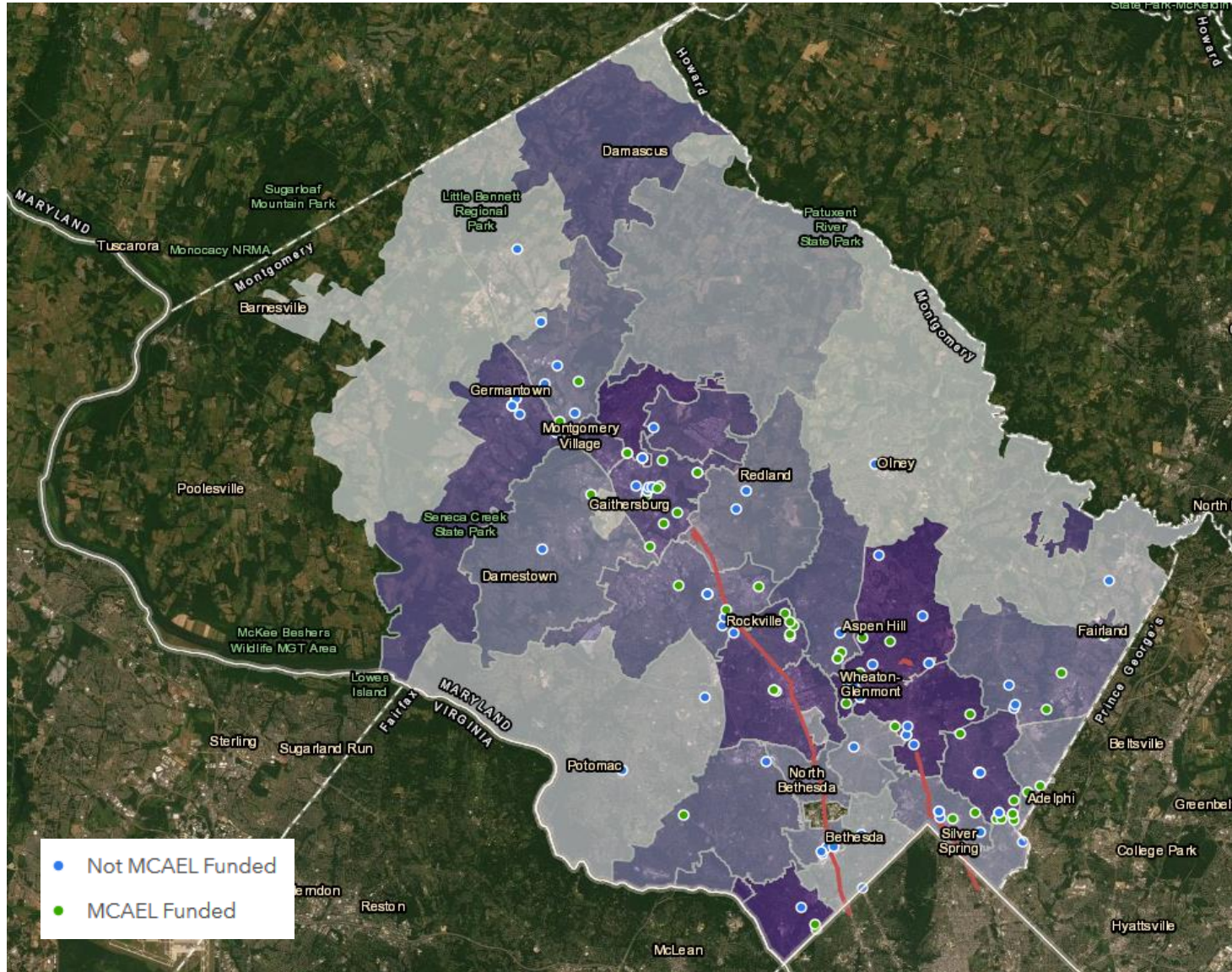
This map shows the density of the Limited English Proficient (LEP) population (5 years and older) across the county by census tract, based on Census Bureau data. The darkest areas - Germantown, Gaithersburg, Wheaton/Glenmont, Silver Spring/Long Branch - indicate the highest concentrations of LEP residents.

The small dots represent FY19 English class locations; green dots denote MCAEL-funded providers, blue ones are providers that are part of the wider coalition.

LEP Residents Per Sq Mile



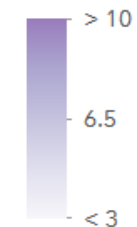
How well are adult ELLs being served? (LEP Learners as % of LEP Population)



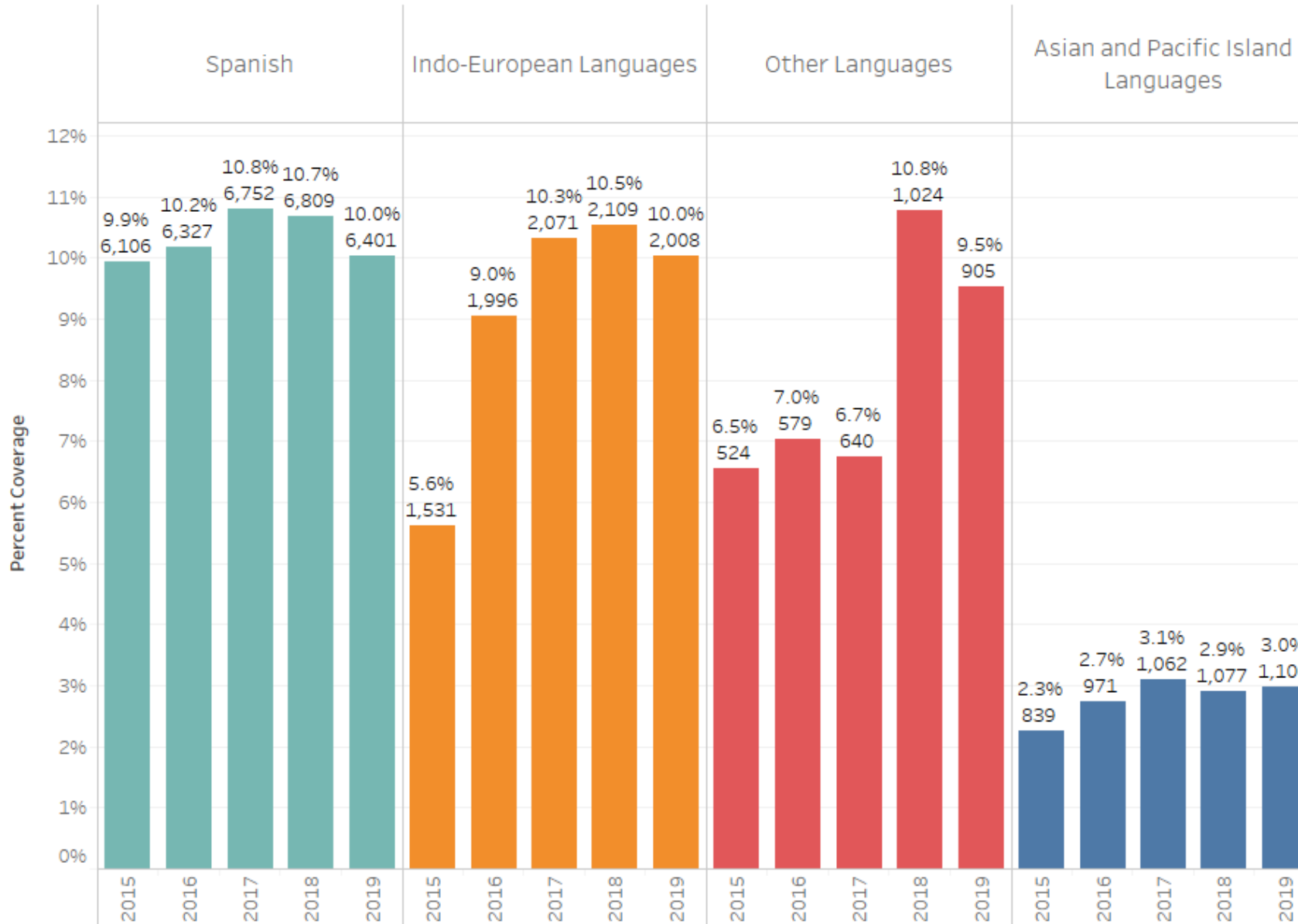
Mapping FY19 learner data from MCAEL-funded programs and other nonprofit providers with the largest numbers of learners enables us to see how many learners there are compared to the total Limited English Proficient population (18+) in each zip code. The darker the zip code area on the map, the higher the percentage of FY19 learners, or the more learners reached.

The small dots represent FY19 English class locations; green dots denote MCAEL-funded providers, blue ones are providers that are part of the wider coalition.

Learners as Share of LEP (%)



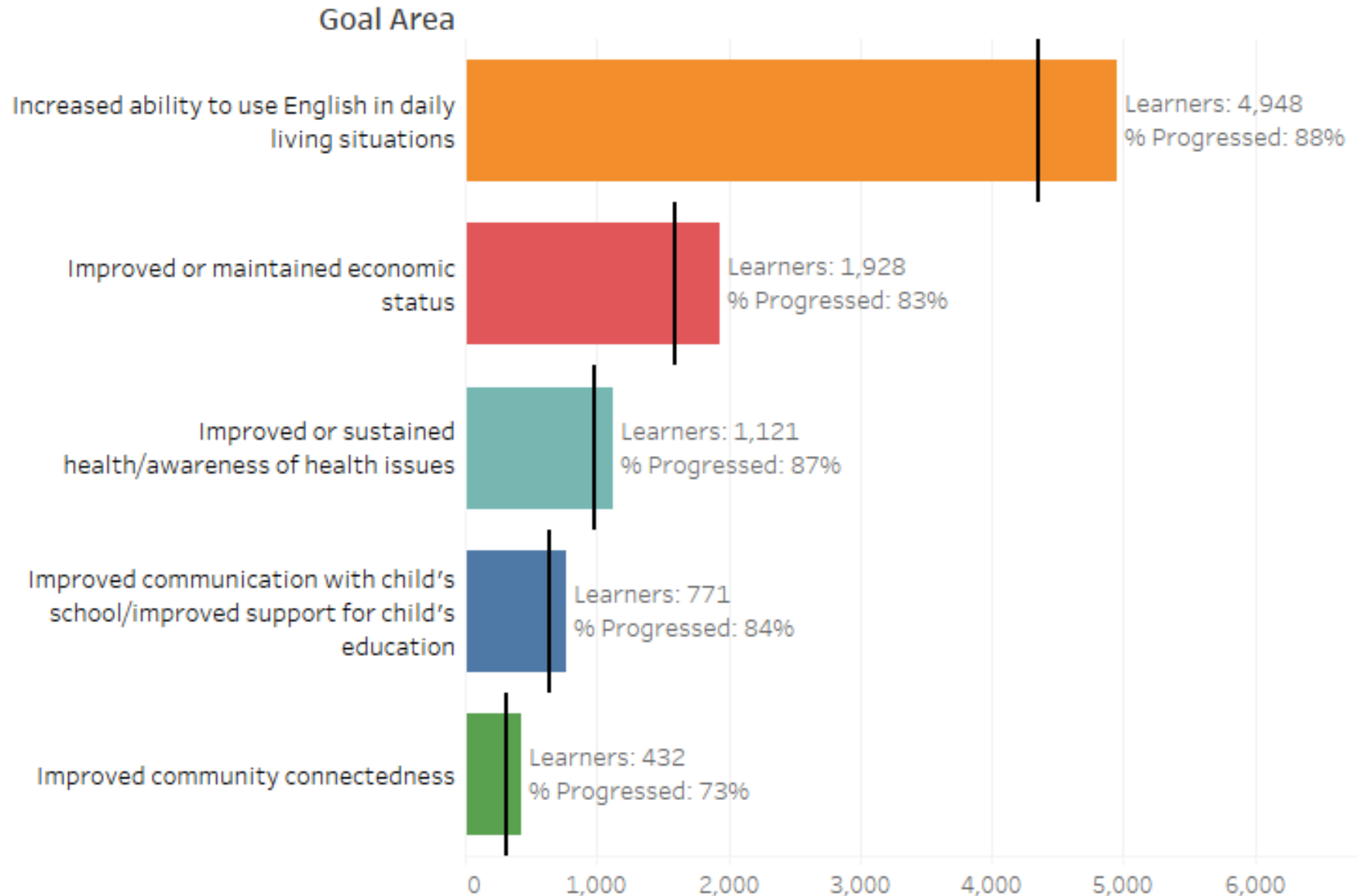
Percent of LEP Residents in English Classes by Language



Includes learner data from:

1. MCAEL grant recipients
2. Montgomery College Adult ESOL and Literacy Grant (AELG) Program
3. Gilchrist Immigrant Resource Center
4. Literary Council of Montgomery County Tutoring Program

FY19 Learner Outcomes by Goal



Common outcome indicators were developed by a group of adult ESOL providers as a way of measuring learner progress in managed enrollment programs. This chart shows the five major categories in which objectives were selected at the outset of each session; progress on each objective is assessed by the end of the session.

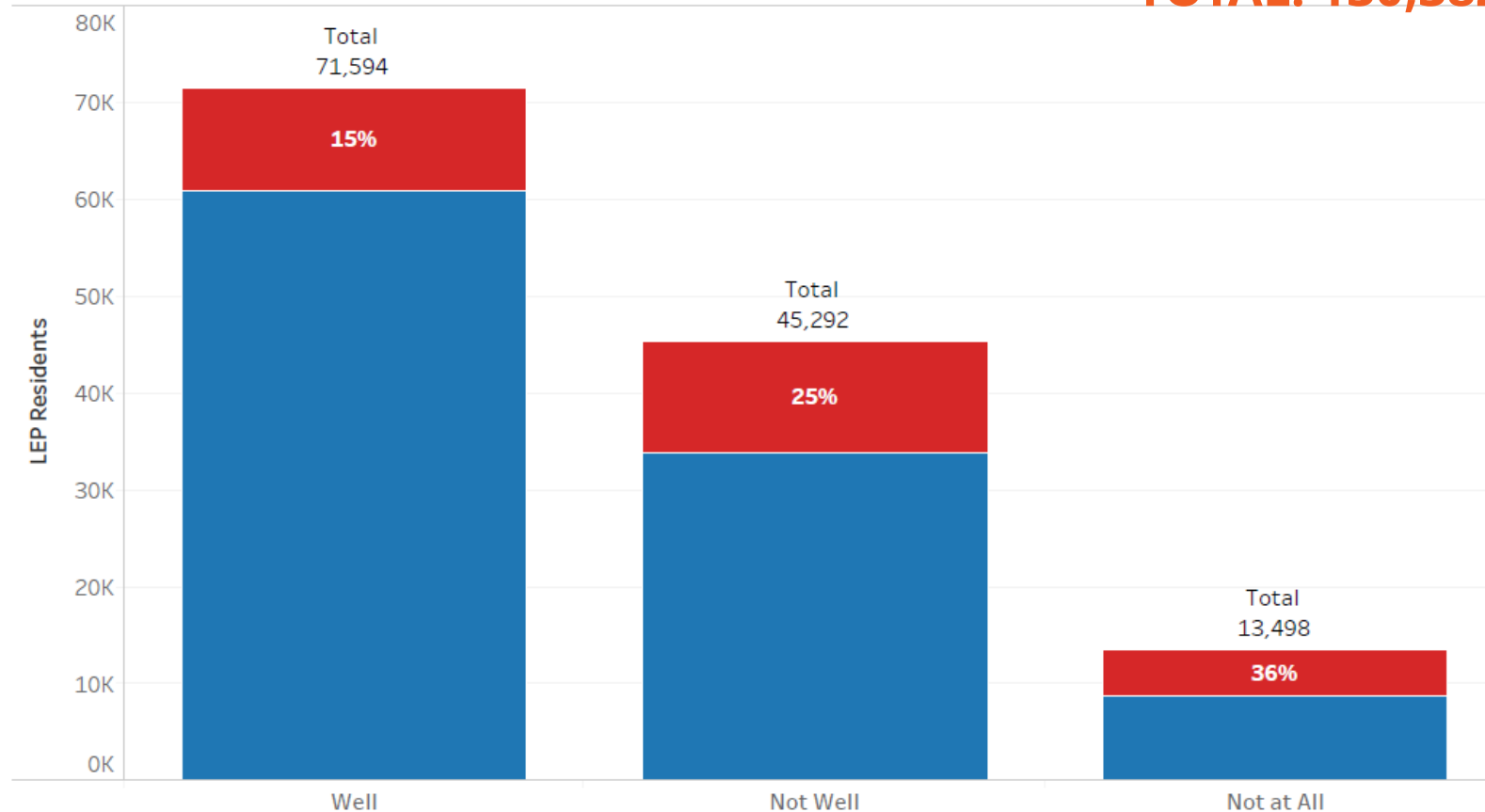
Ability of LEP Residents to Speak English

Age Group

■ 65+

■ 18-64

TOTAL: 130,382

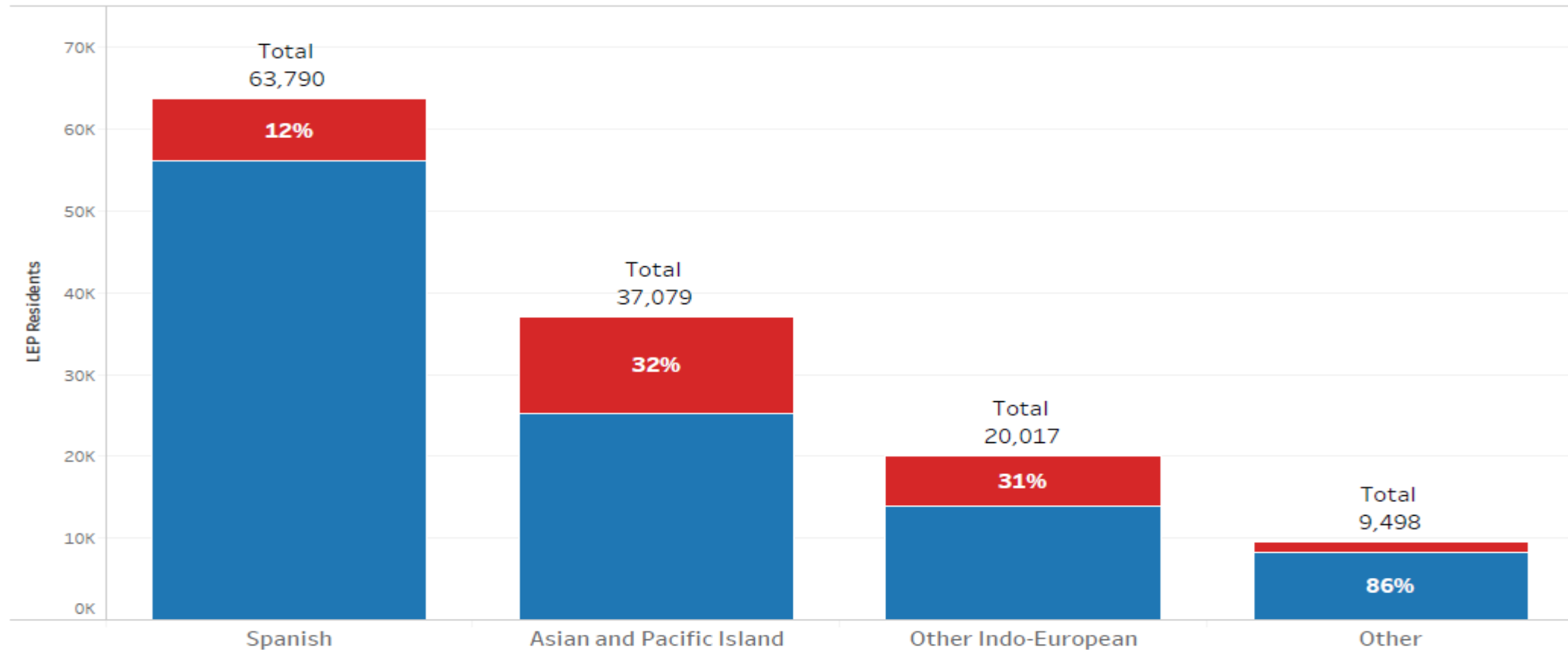


*Source: American
Community Survey,
2017, 5-year estimate*

Number of LEP Residents by Language Group

Age Group
■ 65+ ■ 18-64

Source: American Community Survey, 2017, 5-year estimate



LEP Residents by Language Group Over Time

