

MCAEL

Montgomery Coalition for Adult English Literacy



Rachel Glass, *Executive Director*
rglass@mcael.org

Debbie Bhattacharyya, *Program Manager*
dbhatt@mcael.org

Ursula Richelieu, *Administrative Associate*
connect@mcael.org

301-881-1338
12320 Parklawn Drive, Rockville, MD 20852

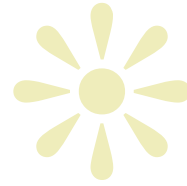
www.mcael.org

RESOURCES

TRAINING

COLLABORATION

ADVOCACY



**Today in Montgomery County,
one in seven residents
are potentially limited in their
ability to speak, read and write
the English language.**

**These individuals face isolation—
from their families, from
their neighbors, and from the
opportunities of the community
in which they live and work.**

**Like a golden key, adult English
literacy can open the door to
better job opportunities; to a
parent's ability to become more
engaged in their child's education;
to healthy living and access to care;
and to realizing one's full potential
as an effective, contributing member
of the community. When adults
learn English and develop
literacy skills, we strengthen the
community as a whole.**



MCAEL strengthens a vibrant network of over 60 adult English literacy providers who collectively employ over 1,500 paid and volunteer instructors and annually help over 20,000 adult learners improve their English literacy and workforce skills.

OUR MISSION

MCAEL is dedicated to strengthening the county-wide adult English literacy network with resources, training, collaborations and advocacy to support a thriving community and an optimal workforce.

OUR VISION

All adult residents are employable, engaged, and empowered by literacy to achieve their full potential.

All local businesses have access to an English literate workforce.



**Adult English Literacy
strengthens our community**



WHAT WE DO

Build Capacity

Professional Development Institute MCAEL provides training, technical assistance, and collaboration opportunities for adult English literacy program staff and instructors in order to strengthen their effectiveness and cultivate a professional community in Montgomery County.

Provider and Instructor Networks MCAEL brings together diverse individuals from throughout the county to share ideas and resources, and to work more effectively in partnership. MCAEL provides a shared infrastructure that reduces costs and leverages community resources, building on best practices and local knowledge.

Community Grantmaking In partnership with Montgomery County Government, MCAEL works to increase the availability of high-quality adult ESOL and literacy services through program grants that support identified community needs and improve the quality of services offered to diverse populations. Funded programs must demonstrate measurable outcomes, and participate in capacity building programs offered by MCAEL.

Engage the Community

Knowledge Center MCAEL serves as a community resource for information on adult English literacy in Montgomery County. Our Provider Directory of Services and Learner Bookmark are the County's primary resources for information on available programs.

Advocacy and Engagement

MCAEL works to promote adult English literacy as a key investment opportunity that is central to family, community, and economic prosperity in Montgomery County.



HOW TO GET INVOLVED

Adult English Literacy Providers Organizations and Instructors can

- * **Meet** colleagues, get fresh ideas and resources, and collaborate through our network
- * **Receive** training and technical assistance
- * **Apply** for program funding

Community Members can

- * **Volunteer** as a classroom instructor or tutor and receive teacher training through our Professional Development Institute
- * **Join** our advocacy efforts — sign up today at connect@mcael.org
- * **Donate** time or in-kind resources to make literacy possible

Businesses can

- * **Strengthen** their current and future workforce by supporting worksite and community based programs
- * **Donate** financial or in-kind resources
- * **Encourage** employee charitable giving, volunteerism, and educational brown-bags on literacy — we can help

Please visit our website to learn more about how you can volunteer or make a contribution to support MCAEL's work.

Please visit our website: www.mcael.org



PHOTO BY MARIO QUIROZ

Letters from Our Learners

"My name is Simone. I am a single mom, worker and immigrant living in this wonderful country. I think the most important challenge for me is to learn English. It is necessary in all levels of my life. First at home with my daughter, who is in kindergarten and starts to speak much more English. At her school with the teacher. At my work with my boss and every place I go."

"My name is Sung Sim. This class is very important and I need to learn English. I can not communicate with the people in this society without learning English and very inconvenient to live in this country as if I am in deafness. Even if I am old I eagerly expect to speak English fluently in near future after learning with passion."

"My name is Oscar. To advance and better my life and my family's life I needed to take the first step: to learn English right away. My son started second grade this year and I take him to school everyday. I can talk to his teacher...We pronounce together the new words and numbers that he learns in school and I just love the feeling that comes when you can share moments like this in your family. Thank you America for giving me the tools needed for a better life through the ESOL classes."

MCAEL

Montgomery Coalition for Adult English Literacy



Provider Directory

Published in 2009

HOW TO USE THIS DIRECTORY

This directory lists all known community providers of adult English literacy in Montgomery County, including non-profit and for-profit programs open to the general public. Information was collected in fall 2008 for general reference purposes only. Inclusion does not signify MCAEL endorsement. Updated entries are at www.mcael.org.

The Provider Directory and accompanying bookmark are designed to help prospective adult English language learners locate programs in the county that meet their needs. In many cases, learners may be supported in their search by a social service provider, information specialist, or other support intermediary. To assist these individuals, "Strategies for Making Effective Referrals" is included on page 28. Newcomers and those with limited English language skills are often overwhelmed by the prospect of contacting agencies for the information. We encourage ongoing assistance to the prospective learner to be sure that an appropriate program has been located.

Providers are listed alphabetically. For each listing, we provide the information students will need to choose a program that will serve their needs: class location and schedule, cost, availability of child care, etc. A geographic index (page 2) will help locate classes by location.

We encourage you to share your feedback at connect@mcael.org. To update your listing, please contact connect@mcael.org.

Other Services Offered

Many of the organizations listed offer a wide range of services to support adult learners and their families. While too numerous to list, we encourage readers to visit www.infomontgomery.org, a database of county human service programs, or to contact the Gilchrist Center for Cultural Diversity, operated by the Montgomery County Department of Recreation, which provides an information and referral service at 240-777-4940. These may include employment counseling and job training, early childhood education, after school programs, citizenship classes, legal assistance, translation services, and cultural activities.

MCAEL
Montgomery Coalition
for Adult English Literacy

Rachel Glass
Executive Director
rglass@mcael.org

Debbie Bhattacharyya
Program Manager
dbhatt@mcael.org

Ursula Richelieu
Administrative Associate
connect@mcael.org

www.mcael.org

Countywide

| | |
|--|----|
| Baltimore City Community College Citizenship Preparation Program | 3 |
| Chinese Culture & Community Services Center CCACC | 7 |
| Literacy Council of Montgomery County (tutoring program) | 18 |
| Literacy Council of Montgomery County English for Daily Living | 19 |
| Literacy Council of Montgomery County ESOL Classes | 19 |
| Montgomery College Adult ESOL and Literacy-GED Program | 19 |
| Linkages to Learning | 17 |
| Montgomery County Public Libraries—Conversation Clubs | 21 |

Clarksburg

| | |
|---|----|
| English School for the Nations | 11 |
| Montgomery County Correctional Facility—Model Learning Center | 21 |

Gaithersburg

| | |
|--|----|
| Ayuda Especial | 3 |
| Baltimore City Community College Citizenship Preparation Program | 3 |
| Covenant Life Church | 8 |
| Ed Bohrer Parent Resource Center | 10 |
| English House | 10 |
| Korean Association of State of Maryland, Metropolitan Area, Inc. | 16 |
| Literacy Council of Montgomery County English for Daily Living | 19 |
| Literacy Council of Montgomery County ESOL Classes | 18 |
| Montgomery County Public Libraries—Language Labs | 23 |
| Spanish Catholic Center of Catholic Charities | 26 |

Germantown

| | |
|--|----|
| Chinese American Senior Services Association (CASSA) | 7 |
| Chinese Culture & Community Services Center CCACC | 7 |
| Korean Association of State of Maryland, Metropolitan Area, Inc. | 16 |
| Literacy Council of Montgomery County ESOL Classes | 19 |
| Montgomery College American English Language Program (AELP) | 20 |
| Montgomery College WD&CE Non-credit Program | 20 |
| Neelsville Presbyterian Church | 23 |
| New Covenant Fellowship Church English Programs | 24 |

Aspen Hill

| | |
|--|----|
| Korean American Senior Citizen's Association (KASCA) | 16 |
| Korean Association of State of Maryland, Metropolitan Area, Inc. | 16 |
| Literacy Council of Montgomery County English for Daily Living | 19 |
| Viers Mill Baptist Church | 28 |

Derwood

| | |
|---|---|
| CASA de Maryland—English for Day Laborers | 5 |
| Derwood Alliance Church | 9 |

Olney

| | |
|--|----|
| Korean Association of State of Maryland, Metropolitan Area, Inc. | 16 |
|--|----|

Rockville

| | |
|--|----|
| Baltimore City Community College Citizenship Preparation Program | 3 |
| Chinese Culture & Community Services Center CCACC | 7 |
| City of Rockville, Rockville Senior Center | 8 |
| Community Ministries of Rockville | 8 |
| Japanese Christian Community Center of Washington, Inc. | 15 |
| Jewish Community Center of Greater Washington | 15 |
| Korean Association of State of Maryland, Metropolitan Area, Inc. | 16 |
| Literacy Council of Montgomery County ESOL Classes | 18 |
| Montgomery College American English Language Program (AELP) | 20 |
| Montgomery College WD&CE Non-credit Program | 20 |
| Shrine of St Jude's ESL Program for Adults | 25 |

Wheaton/Kensington

| | |
|--|----|
| African Immigrant and Refugee Foundation (AIRF) | 3 |
| Baltimore City Community College Citizenship Preparation Program | 3 |
| Business English/Ingles para negociantes | 4 |
| CASA de Maryland—English for Day Laborers | 5 |
| Charles W. Gilchrist Center for Cultural Diversity | 6 |
| Chinese American Senior Services Association (CASSA) | 7 |
| Crossway Community (Partnership with AIRF) | 9 |
| First Baptist Church of Wheaton | 12 |
| Hughes United Methodist Church | 14 |
| Literacy Council of Montgomery County English for Daily Living | 19 |
| Montgomery County Public Libraries—Language Labs | 22 |
| Montgomery Housing Partnership, Inc. | 23 |
| The MontgomeryWorks Sales & Service Learning Center | 27 |

Bethesda

| | |
|---|----|
| Business English/Ingles para negociantes | 4 |
| Chinese Culture & Community Services Center CCACC | 7 |
| English Now! | 1 |
| Fourth Presbyterian Church | 13 |

Colesville

| | |
|--|----|
| Chinese American Senior Services Association (CASSA) | 7 |
| Chinese Culture & Community Services Center CCACC | 7 |
| Eastern Montgomery Regional Services Center | 10 |

Silver Spring

| | |
|---|----|
| African Immigrant and Refugee Foundation (AIRF) | 3 |
| B-CC Cluster Parents English Classes | 4 |
| Boat People SOS | 4 |
| Business English/Ingles para negociantes | 4 |
| Caribbean Help Center | 5 |
| CASA de Maryland—Community ESOL | 5 |
| Families Foremost Center of the Mental Health Association | 12 |
| Foreign Student Program, Silver Spring Team for Children & Families | 13 |
| Howard University Continuing Education-Language Institute-ESL | 14 |
| Latin American Youth Center/Maryland Multicultural Youth Centers | 17 |
| Literacy Council of Montgomery County ESOL Classes | 18 |
| Montgomery College American English Language Program (AELP) | 20 |
| Montgomery County Public Libraries—Language Labs | 22 |
| Montgomery County Refugee Training Program at Mont. College | 22 |
| Sanz School | 24 |
| SEIU Local 32BJ Education Program/SED Center | 25 |
| St. Camillus Catholic Church | 26 |
| St. Michael's Church School | 27 |
| YMCA Youth & Family Svcs. Carroll Ave. & Quebec Terr. Comm. Cntr. | 28 |

Takoma Park

| | |
|---|----|
| Business English/Ingles para negociantes | 4 |
| Charles W. Gilchrist Center for Cultural Diversity | 6 |
| Chinese Culture & Community Services Center CCACC | 7 |
| English House | 10 |
| English Now! | 11 |
| Korean Association of State of Maryland, Metropolitan Area, Inc. | 16 |
| Linkages to Learning | 17 |
| Literacy Council of Montgomery County (tutoring program) | 18 |
| Montgomery College WD&CE Non-credit Program | 20 |
| Montgomery County Public Libraries—Conversation Clubs | 21 |
| Spanish Catholic Center of Catholic Charities | 26 |
| YMCA Youth & Family Svcs. Carroll Ave. & Quebec Terr. Comm. Cntr. | 28 |

African Immigrant and Refugee Foundation (AIRF)**Wanjiru Kamau**

p 202-234-2473
? daytime (leave message)
e none

11350 Baroque Rd., Silver Spring, MD 20901

www.airfound.org

Class locations: 20903, 20895

Cost/session: \$50 or less

Class times: day, evening

Child care: in some cases

Courses: beginning ESOL, intermediate ESOL

Semesters: Fall, Winter, Spring

Weeks/session: 10

Hours/week: 6

Transportation: no

**Ayuda Especial Epworth United Methodist Church****Ana Brito**

p 301-990-7673
e none

9008 Rosemont Dr., Gaithersburg, MD 20877

www.epworthsteeple.org

Class locations: 20877

Cost/session: free

Class times: evening

Courses: beginning ESOL, intermediate ESOL, advanced ESOL

Baltimore City Community College Citizenship Preparation Program**Gail Kramer Mogol**

p 410-580-2756
? M-F, 8:30am-5pm
e gmogol@bccc.edu

6764 A Reisterstown Rd., Baltimore, MD 21215

www.bccc.edu

Class locations: 21215, 21201, 20902, 20850, 20877

More than six locations: yes

Cost/session: free

Class times: day

Child care: no

Requirements: must be a permanent resident for a minimum of 4 years

Courses: citizenship for seniors

Semesters: all

Weeks/session: 12

Hours/week: 2-6

Transportation: no assistance provided

B-CC Cluster Parents English Classes**Cathi Goltz**

p 240-497-6320
? M-F, 7am-3:30pm
e catherine_f_goltz@mcpsmd.org

4301 East-West Hwy., Bethesda, MD 20814

Class locations: 20910

Cost/session: \$50 or less

Class times: evening

Child care: yes

Requirements: Students must be parents of children in the B-CC Cluster schools

Courses: beginning ESOL, intermediate ESOL

Semesters: Winter, Spring

Weeks/session: 10-12

Hours/week: 4

Transportation: no assistance provided

Boat People SOS**Annie Nguyen**

p 301-439-0505
? M-F, 12pm-4pm
e annie.nguyen@bpsos.org

817 Silver Spring Ave., Ste. 110, Silver Spring, MD 20910

www.bpsos.org

Class locations: 20910

Cost/session: \$50-\$100

Class times: evening

Child care: yes

Courses: beginning ESOL, intermediate ESOL, family literacy

Semesters: Fall, Spring, rolling admission

Weeks/session: 12

Hours/week: 2

Transportation: no assistance provided



Business English/Ingles para negociantes

Moshe Briel

p 301.801.1972

? M-F, 9am-5pm (leave message if no answer)

e Moshe.Briel@Hotmail.Com

1305 Arbor View Road, Wheaton, MD 20902

Class locations: 20902, 20817, 20009, 20901, 20910, tutors meet with students at various locations

Cost/session: \$50 or less

Class times: day, evening, weekend

Child care: no

Requirements: native-language literacy and basic conversational English required

Courses: advanced ESOL, conversation class, pre-GED/GED, family literacy, ESOL for seniors

Semesters: rolling

Weeks/session: 4

Hours/week: 4-6

Transportation: no assistance provided

Caribbean Help Center

Rev. Evans Faustin

p 301-593-6922

? M-F, 10am to 4pm

e caribbeanhelpcenter1@juno.com

10140 Sutherland Road, Silver Spring, MD 20901,

www.caribbeanhelpcenter.org

Class locations: 20910

Semesters: tutoring available year-round

CASA de Maryland— English for Day Laborers

Darwin Bonilla

p 301 - 431-4185 (Ext. 208)

? M-F, 9am-5pm

e dbonilla@casamd.org

734 University Blvd. E., Silver Spring, MD 20903

www.casademaryland.org

Class locations: 20902, 20855

Cost/session: varies, please call

Class times: day, evening

Child care: no

Requirements: Serve agency clients only

Courses: beginning ESOL

Semesters: Fall, Winter, Spring

Weeks/session: 10 and 13

Hours/week: 10

Transportation: no assistance provided



CASA de Maryland— Community ESOL

Yecenia Castillo or Darwin Bonilla

p 301 431-4185 (Ext. 266 & 208)

? M-F, 9am-5pm

e ycastillo@casamd.org or dbonilla@casamd.org

734 University Blvd. E., Silver Spring, MD 20903

www.casademaryland.org

Class locations: 20901

Cost/session: varies, please call

Class times: evening

Child care: yes

Courses: beginning ESOL, intermediate ESOL, advanced ESOL, Spanish literacy

Semesters: Fall, Winter, Spring

Weeks/Session: varies, 10-13

Hours/week: 8-10

Transportation: no assistance provided

Charles W. Gilchrist Center for Cultural Diversity

Maritza Rivera-Cohen

p 240-777-4940

? M-F, 9am-5pm

e maritza.rivera-cohen@montgomerycountymd.gov

11319 Elkin St., Wheaton, MD 20902

www.montgomerycountymd.gov

Class locations: 20902, tutors meet with students at various locations

Cost/session: free

Class times: day, evening, weekend

Child care: no

Courses: beginning ESOL, intermediate ESOL, advanced ESOL, conversation class, Spanish literacy, ESOL for seniors, vocational English

Semesters: Fall, Winter, Spring, Summer

Weeks/session: 8

Hours/week: varies

Transportation: no assistance provided



Chinese American Senior Services Association (CASSA)

Bill Cheng

p 301-656-2332

? M-F, 9am-5pm

e billhcheng@yahoo.com

808 Sufield Dr., Gaithersburg, MD 20878

Class locations: 20876, 20902, 20905

Cost/session: \$50 or less

Class times: day

Child care: no

Requirements: Serve members only; native language literacy required

Courses: beginning ESOL, intermediate ESOL, advanced ESOL, conversation class, Chinese literacy, ESOL for seniors

Semesters: Fall, Spring

Weeks/session: 16

Hours/week: 2

Transportation: no assistance provided

Chinese Culture & Community Services Center CCACC

Vincent Tang or Vivien Kao

p 240-631-1200

? M-F, 10am-3pm

e tltang2004@yahoo.com or
fenwenwu@yahoo.com

16309 Comprint Ct., Gaithersburg, MD 20877

www.ccacc-dc.org

Class locations: 20874, 20814, 20852, 20904, 20852, 20850, tutors meet with students at various locations

More than six locations: yes

Cost/session: \$50 or less

Class times: day, evening, weekend

Child care: no

Courses: beginning ESOL, intermediate ESOL, advanced ESOL, conversation class, ESOL for seniors

Semesters: Fall, Spring, Summer

Weeks/session: 20

Hours/week: 2

Transportation: no assistance provided

City of Rockville Rockville Senior Center

Loraine Schack

p 240-314-8810

? M-F, 8:30am-5pm

e lschack@rockvillemd.gov

1150 Carnation Dr., Rockville, MD 20850

www.rockvillemd.gov

Class locations: 20850

Cost/session: \$50 or less

Class times: day

Child care: no

Requirements: Must be 60+

Courses: beginning ESOL, intermediate ESOL, advanced ESOL, conversation class, ESOL for seniors

Semesters: Fall, Winter, Spring

Weeks/session: 10

Hours/week: 2

Transportation: free for Rockville residents

Community Ministries of Rockville Latino Outreach Program

Cecilia Rojas

p 301-251-2136

? M-F, 9am - 3pm

e crojas@cmrocks.org

1010 Grandin Ave., Rockville, MD 20852

www.cmrocks.org

Class locations: 20851

Cost/session: \$50-\$100

Class times: evening

Child care: yes

Courses: beginning ESOL, intermediate ESOL, Spanish literacy

Semesters: Fall, Spring

Weeks/session: 14

Hours/week: 4

Transportation: no assistance provided

Covenant Life Church

ESL Administrator

p 301-869-2800

? M-F, 8:30am-5pm

e ESL@Covlife.org

7501 Muncaster Mill Rd., Gaithersburg, MD 20877

www.covlife.org/ESL

Class locations: 20877

Cost/session: \$50-\$100

Class times: evening

Child care: yes

Courses: beginning ESOL, intermediate ESOL, advanced ESOL, conversation class

Semesters: Fall, Spring

Weeks/session: 10

Hours/week: 2

Transportation: no assistance provided



Crossway Community (Partnership with AIRF)

Mary Harding

p 301-929-2505

? T-F, 9am-12pm

e mharding@crossway-community.org

3015 Upton Dr., Kentsington, MD 20895

www.crossway-community.org

Class locations: 20895

Cost/session: \$50 or less

Class times: day

Child care: no

Courses: beginning ESOL, advanced ESOL, conversation class, TOEFL preparation

Semesters: Fall, Winter, Spring

Hours/week: 6

Transportation: no assistance provided

Derwood Alliance Church

Kristen Durning

p 301-963-9200

? M-Th, morning

e ksurn@msn.com

16501 Redland Rd., Rockville, MD 20855

www.derwoodalliance.org

Class locations: 20855

Cost/session: \$50 or less

Class times: day, evening

Child care: no

Courses: personal tutoring, beginning ESOL, intermediate ESOL, advanced ESOL, conversation class, TOEFL preparation, ESOL for seniors

Semesters: Fall, Spring

Weeks/session: 12

Hours/week: 2

Transportation: no assistance provided

Eastern Montgomery Regional Services Center

Gwen Haney

p 240-777-8400

? M-F, 8:30am - 5pm

e gwen.haney@montgomerycountymd.gov

3300 Briggs Chaney Rd., Silver Spring, MD 20904

www.montgomerycountymd.gov/eastco

Class locations: 20904

Cost/session: free

Class times: day, evening



Child care: no

Courses: beginning ESOL, intermediate ESOL

Semesters: Fall, Winter, Spring

Weeks/session: 15

Hours/week: 2.5 to 5

Transportation: no assistance provided



Ed Bohrer Parent Resource Center

Rita Vallejo Restrepo

p 301-926-4895

? M-F, 9am-3pm

e rita-vallejorestrepo@mcpsmd.org

35 North Summit Ave., Gaithersburg, MD 20877

www.fs-inc.org

Class locations: 20877

Cost/session: free

Class times: day

Child care: in some cases

Courses: beginning ESOL, intermediate ESOL, ESOL for seniors

Semesters: Fall, Winter, Summer

Weeks/Session: 12

Hours/week: 10

Transportation: instruction at residence

English House

Hallie Wallack

p 301-527-0600

? M-F /1-8pm ; Sat, 8am-12pm

e hallie@transemanatics.com

26 N. Summit Ave., Gaithersburg, MD 20877

www.englishhouseusa.com

Class locations: 20877, tutors meet with students at various locations

Cost/session: \$100 or more

Class times: day, evening, weekend

Child care: no

Requirements: native-language literacy required

Courses: personal tutoring, beginning ESOL, intermediate ESOL, advanced ESOL, conversation class, TOEFL preparation, seniors

Semesters: rolling

Weeks/session: 4

Hours/week: 4-20

Transportation: no assistance provided



English Now!

Paul Boesen

p 703-785-4580

? M-F, 9am-5pm

e paul.boesen@english-now.com

4903 Montgomery Ln., Bethesda, MD 20814

www.english-now.com

Class locations: 20814, 20009, tutors meet with students at various locations

Cost/session: \$100 or more

Class times: day, evening, weekend

Child care: no

Courses: personal tutoring, self-directed learning, beginning ESOL, intermediate ESOL, advanced ESOL, conversation class, TOEFL preparation, ESOL for seniors

Semesters: rolling

Weeks/session: 4

Hours/week: 4 to 16

Transportation: instruction at residence, instruction at workplace, no transportation provided

English School for the Nations

Angela Sutsakhan

p 240-423-0080

? afternoons

e sidangela@comcast.net

21925 Frederick Rd., Clarksburg, MD 20871

www.greenridgebaptist.org

Class locations: 20871

Cost/session: \$50-\$100

Class times: day, evening

Child care: no

Requirements: native-language literacy required

Courses: beginning ESOL, intermediate ESOL

Weeks/session: rolling admissions, students pay monthly

Hours/week: 4-20

Transportation: no assistance provided

Families Foremost Center of the Mental Health Association

Shari Waddy

p 301-585-3424

? M-F, 9:30am-4:30pm

e swaddy@mhamc.org

1109 Spring St., Ste. 300, Silver Spring, MD 20910

www.mhamc.org

Class locations: 20910

Cost/session: free



Class times: day

Child care: yes

Requirements: Serve agency clients only; native language literacy required

Courses: beginning ESOL, conversation class, pre-GED/GED, family literacy

Semesters: Fall, Spring

Weeks/session: 24

Hours/week: 4

Transportation: students receive stipend



First Baptist Church of Wheaton

Jeff Bennett

p 240-838-9828

? Anytime

e jben1985@aol.com

3110 Emory Church Rd., Olney, MD 20832

Class locations: 20902

Cost/session: \$50 or less

Class times: evening

Child care: no

Courses: beginning ESOL, intermediate ESOL, conversation class

Semesters: Fall, Spring

Weeks/session: 16

Hours/week: 3-6

Transportation: no assistance provided

Foreign Student Program, Silver Spring Team for Children and Families, Inc.

Mary Anne Hess

p 301-814-5228

? M-S, 9am-8pm. Please leave a message and it will be returned.

e mahess@aol.com

PO Box 3578, Silver Spring, MD 20918

Class locations: 20910

Cost/session: \$50-\$100

Class times: evening

Child care: no

Requirements: native-language literacy required

Courses: beginning ESOL, intermediate ESOL, advanced ESOL, conversation class

Semesters: Fall, Spring

Weeks/session: varies

Hours/week: 4.5 in class, plus 6 hours open drop-in time in computer lab

Transportation: no assistance provided

Fourth Presbyterian Church

Margaret F. Cudney**p** 301-299-7385**?** M-F, 9am-5pm**e** MFCudney@comcast.net

5500 River Rd., Bethesda, MD 20816

www.4thpres.org**Class locations:** 20816**Cost/session:** \$50 or less**Class times:** evening**Child care:** no**Courses:** beginning ESOL, intermediate ESOL, advanced ESOL, conversation class**Semesters:** rolling admission**Weeks/Session:** 36, Summer-8**Hours/week:** 2**Transportation:** no assistance provided**Howard University Continuing Education-Language Institute—ESL****Patricia Bone****p** 301.608.4144**?** M-F, 9am-4pm**e** pbone@howard.edu

1100 Wayne Ave., Ste. 100, Silver Spring, MD 20910

www.con-ed.howard.edu**Class locations:** 20910**Cost/session:** \$100 or more**Class times:** day, evening, weekend**Child care:** no**Courses:** personal tutoring, beginning ESOL, intermediate ESOL, advanced ESOL, pre GED/GED, TOEFL preparation**Semesters:** Fall, Winter, Spring, Summer**Weeks/session:** 14**Hours/week:** 20**Transportation:** no assistance provided**Hughes United Methodist Church****Linda French****p** 301-989-8853**?** M-F, 12pm-8pm**e** linda.french@wap.org

10700 Georgia Ave., Wheaton, MD 20902

www.hughesumc.org**Class locations:** 20902**Cost/session:** Free**Class times:** evening**Child care:** no**Courses:** beginning ESOL, intermediate ESOL, advanced ESOL**Semesters:** Fall, Winter**Weeks/session:** 6**Hours/week:** 2**Transportation:** no assistance provided**Japanese Christian Community Center of Washington, Inc.****Junichi Saigo****p** 240-423-1813, 301-738-0022**?** M-F, 9:30am-12:30pm**e** saigo@wajc.org

13008 N. Commons Way, Potomac, MD 20854

www.community.wajc.org (Japanese language)**Class locations:** 20852**Cost/session:** \$100 or more**Class times:** day**Child care:** yes**Courses:** beginning ESOL, intermediate ESOL**Semesters:** Fall, Winter, Spring, Summer**Weeks/session:** 13**Hours/week:** 12**Transportation:** no assistance provided**Jewish Community Center of Greater Washington****Svetlana Danshes, Polina Vladimirsky****p** 301-348-3875, 301-348-3876**?** M-Th**e** pvladimirsky@jccgw.org

6125 Montrose Rd., Rockville, MD 20852

www.jccgw.org**Class locations:** 20852**Cost/session:** \$50 or less**Class times:** day**Child care:** no**Requirements:** must be 60+**Courses:** beginning ESOL, intermediate ESOL, advanced ESOL, conversation class, ESOL for seniors**Semesters:** Fall, Winter, Spring, Summer**Weeks/session:** 5**Hours/week:** 3**Transportation:** no assistance provided

Korean American Senior Citizen's Association (KASCA)

Jongsun Park, Manchoon Kang

p 301-438-7304
? M-F, 9:30am-4pm
e kascamd@hotmail.com or
 jongsunpark34@yahoo.com

13421 Georgia Ave. #117, Silver Spring, MD 20906

Class locations: 20906

Cost/session: \$50-\$100

Class times: day

Child care: no

Courses: beginning ESOL, intermediate ESOL, conversation class, Korean literacy, ESOL for seniors

Semesters: Fall, Spring

Weeks/session: 15

Hours/week: 3

Transportation: van service for some students

Korean Association of State of Maryland, Metropolitan Area, Inc.

Kun K. Sin

p 301-875-7007
? M-F, 1pm-7pm
e ksin42@msn.com

5540B Randolph Rd., Rockville, MD 20852

Class locations: 20852, 20832, 20784, 20906, 20878, 20874, tutors meet with students at various locations

Cost/session: \$50 or less

Class times: day, evening

Child care: in some cases

Requirements: Serve members only, but open to all Koreans and relatives

Courses: beginning ESOL, intermediate ESOL, advanced ESOL, conversation class, ESOL for seniors

Semesters: Fall, Winter, Spring, Summer

Weeks/session: 10

Hours/week: 4

Transportation: instruction at residence, instruction at workplace, no transportation assistance provided

Latin American Youth Center/ Maryland Multicultural Youth Centers

Janelle Cauthen

p 301-495-0441, ext 223
? M-F, 9am-5pm
e janelle@layc-dc.org

1320 Fenwick Lane, Ste. 600, Silver Spring, MD 20910

www.layc-dc.org



Class locations: 20910

Cost/session: free

Class times: day, weekend

Child care: no

Courses: pre-GED/GED

Semesters: Fall, Winter, Spring, Summer

Weeks/session: 9

Hours/week: 12

Transportation: students receive stipend

Linkages to Learning

Mary Wilson

p 240 777-1661
? 9:30-5:30
e mary_j_wilson@mcpsmd.org

51 Monroe Street, Rockville, MD 20850

www.montgomerycountymd.gov/content/linkages

More than six locations: yes; contact local school

Cost/session: \$50 or less

Class times: evening

Child care: yes

Requirements: students must be parents of children in schools served by Linkages

Courses: personal tutoring, beginning ESOL, intermediate ESOL, conversation class

Semesters: Fall, Spring

Weeks/session: 12

Hours/week: 3-4

Transportation: no assistance provided

Literacy Council of Montgomery County ESOL Classes

Stephanie Williams

p 301-610-0030
? M-F, 9:30am-5:30pm
e stephanie@literacycouncilmcmd.org

21 Maryland Ave., Ste. 320, Rockville, MD 20850

www.literacycouncilmcmd.org

Class locations: 20910, 20878, 20851, 20874

Cost/session: free

Class times: day, evening

Child care: no

Requirements: must live or work in Montgomery County

Courses: beginning ESOL, intermediate ESOL, advanced ESOL, ESOL for seniors

Semesters: Fall, Winter, Spring

Weeks/session: 10

Hours/week: 9

Transportation: no assistance provided



Literacy Council of Montgomery County (tutoring program)

Kim Brown

p 301-610-0030

? M-F, 9:30am-5:30pm

e kim@literacycouncilmcmd.org

21 Maryland Ave., Ste. 320, Rockville, MD 20850

www.literacycouncilmcmd.org

Class locations: tutors meet with students at various locations

Cost/session: \$50 or less

Class times: day, evening, weekend

Child care: no

Requirements: Must live or work in Montgomery County

Courses: personal tutoring, self-directed learning, conversation class, ESOL for seniors

Semesters: rolling admission

Hours/week: 2

Transportation: no assistance provided

Literacy Council of Montgomery County English for Daily Living

Jayne Klein

p 301-610-0030

? M-Th, 12pm-5pm

e jayne@literacycouncilmcmd.org

21 Maryland Ave., Ste. 320, Rockville, MD 20850

www.literacycouncilmcmd.org

Class locations: 20906, 20902, 20877

Cost/session: \$50 or less

Class times: evening

Child care: in some cases

Requirements: must live or work in Montgomery County

Courses: beginning ESOL

Semesters: Fall, Winter, Spring

Weeks/session: 8

Hours/week: 2

Transportation: no assistance provided

Montgomery College Adult ESOL and Literacy-GED Program

Various staff available

p 301-962-8950

? M-F, 9am-5pm; automated phone service at all times

e ESOL@montgomerycollege.edu

11002 Viers Mill Rd., Ste. 210, Silver Spring, MD 20902,

www.montgomerycollege.edu/wdce/aelg

More than six locations: yes

Cost/session: \$50-\$100

Class times: day, evening, weekend

Child care: no

Requirements: Montgomery County residency

Courses: beginning ESOL, intermediate ESOL, advanced ESOL, pre-GED/GED

Semesters: Fall, Winter, Spring, Summer

Weeks/session: varies

Hours/week: 5-15

Transportation: no assistance provided

Montgomery College American English Language Program (AELP)

Dr. Avis Jones-Petlane

p 240-567-7404

? M-F, 9am-5pm

e avis.jones-petlane@montgomerycollege.edu

51 Mannakee St., Rockville, MD 20850

www.montgomerycollege.edu/Departments/readrv

Class locations: 20850, 20912, 20876

Cost/session: varies, please call

Class times: day, evening, weekend

Child care: no

Courses: intermediate ESOL, advanced ESOL

Semesters: Fall, Spring, Summer

Weeks/session: 15 week classes during Fall and Spring semesters; 5 week classes during Summer I and Summer II

Hours/week: 5

Transportation: no assistance provided

Montgomery College WD&CE Non-credit Program

Annette Greene

p 240-567-7262

? M-F, 10am-4pm

e annette.greene@montgomerycollege.edu

51 Mannakee St., Rockville, MD 20850

www.montgomerycollege.edu/wdce/ce/esl.html

Class locations: 20850, 20912, 20876

Cost/session: \$100 or more

Class times: day, evening, weekend

Child care: in some cases

Requirements: Must have some basic speaking and writing skills in order to qualify for the lowest level course

Courses: self-directed learning, advanced ESOL

Semesters: Fall, Spring, Summer

Weeks/session: 14

Hours/week: 2-10

Transportation: no assistance provided



Montgomery County Correctional Facility Model Learning Center

Barbara James

p 240-773-9905

? M-F, 7am-3pm

e barbara.james@montgomerycountymd.gov

22880 Whelan Ln., Boyds, MD 20841

Class locations: 20841

Cost/session: free

Class times: day, evening

Child care: no

Requirements: must be incarcerated at Montgomery County Correctional Facility

Courses: beginning ESOL, Spanish literacy, pre-GED/GED

Semesters: all

Weeks/session: 10

Hours/week: 6

Montgomery County Public Libraries Conversation Clubs

Michele Sellars

p 240 777-0030

? M-F, 8:30am-5pm

e michele.sellars@montgomerycountymd.gov

21 Maryland Ave., Ste. 310, Rockville, MD 20850

www.montgomerycountymd.gov/library

Class locations: check local branch library for locations and times

More than six locations: yes

Cost/session: free

Class times: day, evening, weekend

Child care: no

Courses: self-directed learning, conversation class

Semesters: Fall, Winter, Spring, Summer

Weeks/session: ongoing

Hours/week: 1

Transportation: no assistance provided

Montgomery County Public Libraries Language Labs

Gaithersburg: **Lillian Whitis**

Long Branch: **Sue Unger**

Wheaton: **Fran Ware**

p Gaithersburg: 240 773-9490; Long Branch: 240 777-0910; Wheaton: 240 777-0678

? M-F, 9am-5pm

e G: lillian.whitis@montgomerycountymd.gov

LB: sue.unger@montgomerycountymd.gov

W: fran.ware@montgomerycountymd.gov



18330 Montgomery Village Ave., Gaithersburg, MD 20879

8800 Garland Ave., Silver Spring, MD 20901

11701 Georgia Ave., Wheaton, MD 20902

www.montgomerycountymd.gov/library

Class locations: 20879, 20901, 20902; check individual branch library for location and times

Cost/session: free

Class times: day, evening, weekend

Child care: no

Courses: self-directed learning, advanced ESOL

Semesters: does not apply

Weeks/session: ongoing

Hours/week: up to 2 hours per day for use of language lab independent study

Transportation: no assistance provided

Montgomery County Refugee Training Program at Montgomery College

Noa Sadan

p 240-567-1404/1405, 301-649-8050

? M-F 8:30am-5pm; Sat. 9am-12pm

e noa.sadan@montgomerycollege.edu

8561 Fenton St., Ste. 210, Silver Spring, MD 20910

www.montgomerycollege.edu/wdce/aelg/refugeecenter.htm

Class locations: 20910

Cost/session: free

Class times: day, evening, weekend

Child care: no

Requirements: Must have status as refugee or asylee

Courses: personal tutoring, self-directed learning, beginning ESOL, intermediate ESOL, advanced ESOL, ESOL for seniors

Semesters: rolling admission

Weeks/session: 8

Hours/week: varies, 3-20 hours/week

Transportation: no assistance provided

Montgomery Housing Partnership, Inc.

Angela Diaz

p 301-622-2400 x 41

? M-F, 9am-5pm

e adiaz@mhpartners.org

12200 Tech Rd., Ste. 250, Silver Spring, MD 20904

www.mhp.org

Class locations: 20902

Cost/session: \$50 or less

Class times: evening

Child care: yes

Requirements: serve agency clients only

Courses: beginning ESOL, intermediate ESOL, conversation class

Semesters: Fall, Winter, Spring

Weeks/session: 10

Hours/week: 4

Transportation: instruction at residence, no transportation assistance provided



Neelsville Presbyterian Church

Betty Velthuis

p 301-972-3916

? M-F, 10am-3pm

e blvelt@yahoo.com

20701 Frederick Rd., Germantown, MD 20876

www.neelsville.org

Class locations: 20876

Cost/session: free

Class times: weekend

Child care: no

Courses: beginning ESOL, intermediate ESOL

Semesters: Fall, Spring

Weeks/session: 20

Hours/week: 2

Transportation: no assistance provided

New Covenant Fellowship Church English Programs

Chulsoo Chin

p 301 437 1023 (cell)

? M-F, 9am-5pm

e usabriefing@gmail.com

10108 Devere Ct., Silver Spring, MD 20903

Class locations: 20874

Cost/session: \$50 or less

Class times: day

Child care: no

Requirements: native-language literacy required

Courses: conversation class, ESOL for seniors

Semesters: Fall, Spring

Weeks/session: 16

Hours/week: 4

Sanz School

George Rado

p 301-608-2300

? M-F, 8am-6pm

e george@sanzeu.edu

8455 Colesville Rd. #200, Silver Spring, MD 20910

www.sanzeu.edu

Class locations: 20910

Cost/session: \$100 or more

Class times: day, evening, weekend

Child care: no

Courses: beginning ESOL, intermediate ESOL, advanced ESOL

Semesters: rolling

Weeks/session: 10 weeks morning; 12 weeks evening; 18 weeks weekend

Hours/week: 24 hrs morning; 20 hours evening; 16 weeks weekend

Transportation: no assistance provided

SEIU Local 32BJ Education Program/SED Center

Jose Gonzalez

p 301-562-9301 Ext. 216

? M-F, 2pm-8pm

e joseg9@l82training.com

8412 Georgia Ave. (Lower Level side entrance), Silver Spring, MD 20910

www.sedcenter.org

Class locations: 20910

Cost/session: \$100 or more

Class times: evening, weekend

Child care: in some cases

Requirements: native-language literacy required

Courses: beginning ESOL, intermediate ESOL, advanced ESOL, pre-GED/GED, TOEFL preparation

Semesters: Fall, Winter, Spring

Weeks/session: 10

Hours/week: 6-10

Transportation: no assistance provided



Shrine of St Jude's ESL Program for Adults

Carmen Vincent

p 301-641-2977 (cell),
p 301-251-4372 (work, weekdays)
? M-F, evenings
e carmenslist@comcast.net
 12701 Viers Mill Rd., Rockville, MD 20853

Class locations: 20853

Cost/session: \$50 or less

Class times: weekend

Child care: no

Courses: beginning ESOL, intermediate ESOL, advanced ESOL

Semesters: school year, summer

Weeks/session: rolling admission

Hours/week: 2

Transportation: no assistance provided

Spanish Catholic Center of Catholic Charities

Katherine Diaz

p 301-740-2523
? M-Th, 12pm-6pm; F, 11am-5pm
e katherine.diaz@CatholicCharitiesDC.org
 415 E. Diamond Ave., Gaithersburg, MD 20877
www.CatholicCharitiesDC.org

Class locations: 20877, tutors meet with students at various locations

Cost/session: \$100 or more

Class times: evening, weekend

Child care: in some cases

Courses: beginning ESOL, intermediate ESOL, conversation class, Spanish literacy, family literacy

Semesters: Fall, Winter, Spring, Summer

Weeks/session: Fall, Winter & Spring: 11 wks, Summer: 4 wks

Hours/week: 2-11

Transportation: no assistance provided

St. Camillus Catholic Church

Mrs. Barbara Lynch

p 301-434-8400
? Please leave message
e sperez@stcamilluschurch.org
 1600 St. Camillus Dr., Silver Spring, MD 20903

Class locations: 20903

Cost/session: \$50 or less

Class times: evening



Child care: no

Courses: beginning ESOL, intermediate ESOL

Semesters: Fall, Winter

Weeks/session: 8

Hours/week: 3

Transportation: no assistance provided

St. Michael's Church School

Maeola Lavergne (Temporary)

p 301-565-0962
? M-F, 10am-4pm
e maeolalav1933@aol.com
 824 Wayne Ave., Silver Spring, MD 20910

Class locations: 20910

Cost/session: free

Class times: evening, weekend

Child care: no

Requirements: native-language literacy required

Courses: beginning ESOL, intermediate ESOL, advanced ESOL, conversation class

Semesters: Fall, Winter, Spring, Summer

Weeks/session: 15

Hours/week: 2

Transportation: no assistance provided

The MontgomeryWorks Sales & Service Learning Center

Mary Ngo

p 240-403-3600
? M-F, 9am - 5pm
e mngo@montgomeryworks.com
 11160 Viers Mill Rd., Wheaton, MD 20902
www.montgomeryworks.com

Class locations: 20902

Cost/session: varies, please call

Class times: evening, weekend

Child care: no

Courses: conversation class

Semesters: Fall, Winter, Spring, Summer

Weeks/session: 12

Hours/week: 3

Transportation: no assistance provided



Viers Mill Baptist Church

Gary Greenberg

p 301-412-2339

? M-F, 9-11:30am

12221 Viers Mill Rd., Silver Spring, MD 20906

www.viersmillbaptist.org

Class locations: 20906

Cost/session: \$50 or less

Class times: evening

Child care: no

Requirements: 16 years or older

Courses: beginning ESOL, intermediate ESOL, conversation class

Semesters: Fall, Spring

Weeks/session: 14

Hours/week: 4

Transportation: no assistance provided

YMCA Youth & Family Services Carroll Avenue & Quebec Terrace Community Center

Belen Bryant

p 301-431-4394

? M-F, 11am-3pm

e bbryant@ymcadc.org

8733 Carroll Ave. #4, Silver Spring, MD 20903

www.ymcadc.org

Class locations: 20903, tutors meet with students at various locations

Cost/session: free

Class times: evening

Child care: no

Courses: beginning ESOL, intermediate ESOL, conversation class, ESOL for seniors

Semesters: Fall, Spring

Weeks/session: Fall-14; Spring-24

Hours/week: 5

Transportation: no assistance provided



Workplace ESOL

In addition to our listing of organizations offering programs to the public, MCAEL would like to also recognize the following organizations for providing workplace ESOL to employees in Montgomery County:

Bethesda Urban Partnership

Marriott International

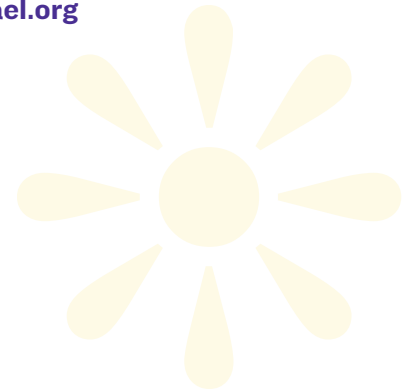
Holy Cross Hospital

Montgomery County Public Schools/SEIU Local 500

National Institutes of Health (NIH)—VPEP Program

For an updated listing of MCAEL providers, please visit our website:

www.mcael.org



EFFECTIVE REFERRAL STRATEGIES

If you are assisting an adult learner to locate a class, we recommend you consider the following four strategies to ensure that your referral is a successful one. An effective referral is achieved when the client has attended 3 or 4 classes and intends to complete the course.

1. Be Learner-centered: While you can help the client to see how learning English can relate to other personal goals, the motivation to begin English literacy classes must come from the learner. If the perception of need comes from you (or from an employer or family member) and isn't shared, the learner may not commit to the necessary long-term investment of time and energy.

2. Be Persistent: Particularly for those whose English is less than proficient, simply supplying a name and telephone number is not effective. The learner may need your assistance in role-playing, or making phone calls together or on their behalf. Ask your client to report back until you are sure they are receiving the needed instruction.

3. Be Socio-Culturally Aware: Instruction is more effective (and student retention more likely) when learners feel a sense of connection with each other and to a community of other learners. For example, a senior client may feel more comfortable in a program directed at older learners. Programs that serve a particular linguistic community, age cohort or local neighborhood may be a draw for some but a barrier for those who might be too embarrassed to attend with acquaintances. Socio-cultural factors can be crucial in making a referral.

4. Be a cheer-leader: Adult ESOL specialists estimate that 100-120 hours of instruction are needed for an adult learner to advance a single level of English competency. Imagine then the time and commitment required when other barriers are in place — such as competing demands of family and work; limited experience in a classroom environment; embarrassment learning among peers; etc. Thus, it is not surprising that **retention is as big a problem as access**. If you are working with your client over a period of time, you can help them have realistic expectations as well as to connect ESOL instruction with other goals. It helps learners to stay motivated by pointing out their progress.

Montgomery County has a diversity of adult ESOL programs to serve a diverse group of adult learners. Your task — often a challenging one — is to match a particular client with one of the many offerings in the county. We offer below a series of criteria to consider when making a referral.

Location Most learners want a program close to their home; some want one close to work or child care. Many learners need a program accessible by public transportation.

Eligibility Most programs have general eligibility requirements, such as age and/or residency. Some programs are restricted to agency clients or serve particular populations.

Schedule Most learners have to fit ESOL classes into a busy schedule of work and family responsibilities. A few programs offer classes on the weekend. Most programs are organized around scheduled sessions or “semesters;” a few have rolling admissions. Some programs have waiting lists.

Intensity There is a great deal of variation in the number of hours a class meets each week. Remember: it takes 100-120 hours of instruction to move from one level to the next.

Classes? Most programs in Montgomery County are classes. Some programs provide volunteer tutors for an individual or small group.

Program Level Some programs only offer classes for beginning and/or intermediate level learners. Advanced level classes are most likely to require a program fee.

Cost Learners vary in their ability and willingness to pay for classes. Don't forget to include the cost of books!

Childcare Many adult learners can only participate if childcare arrangements are provided. If the program doesn't provide childcare, you can help the parent think of other options.

Program Purpose Many programs offer broad-based English language instruction in reading, writing and oral skills. Some programs have more focused purposes — such as conversation classes or workplace literacy or health literacy.

Special Needs An adult learner who is unable to read in his or her mother-tongue might want to begin with native-language literacy programs. Some learners may have learning disabilities that will require a more individualized approach to literacy.

Aryani Ong, President

Non-Profit Consultant

Briana Gowing, President-Elect

Assistant Vice President-External Affairs, Verizon

Ruth Burgos-Sasscer

Immediate Past President

Chancellor Emeritus

Houston Community College System

James Chang, Treasurer

Executive Vice President

Acacia Financial Advisors, LLC

Pamela Saussy, Secretary

Executive Director

Literacy Council of Montgomery County

Alice Eldridge

VP, Ethics and Business Conduct

Lockheed Martin Corporation

Tiffany Heath

National Coalition Organizer

AFL-CIO

Farrah M. Jolly

Project Manager, Prevention

Population Care Management

Kaiser Permanente, Mid-Atlantic States

Gie Kim, Esq.

Chairwoman

Korean American Coalition, D.C. Area Chapter

Emma Muñoz

CEO, Language Matters

Marcos Pesquera

Executive Director

Center on Health Disparities

Adventist Healthcare

Lawrence Pignone

Former Executive Director, Montgomery County United Way

Cecilia Rojas

Director, Latino Outreach Program,

Community Ministries of Rockville

Clarice Somersall

Interim Vice President, Academic Initiatives & Partnerships

Montgomery College

Rich Thometz

Manager, Hailey Development



MCAEL would like to thank our generous donors, staff, board, volunteers, and provider partners for making this directory possible. In particular, we wish to share appreciation for the significant volunteer contribution of time and talent by our friend and colleague Art Dederick.

We also wish to thank graphic designer, Marty Ittner.

MCAEL also acknowledges the generous support provided by Montgomery County Executive Ike Leggett and members of the Montgomery County Council.